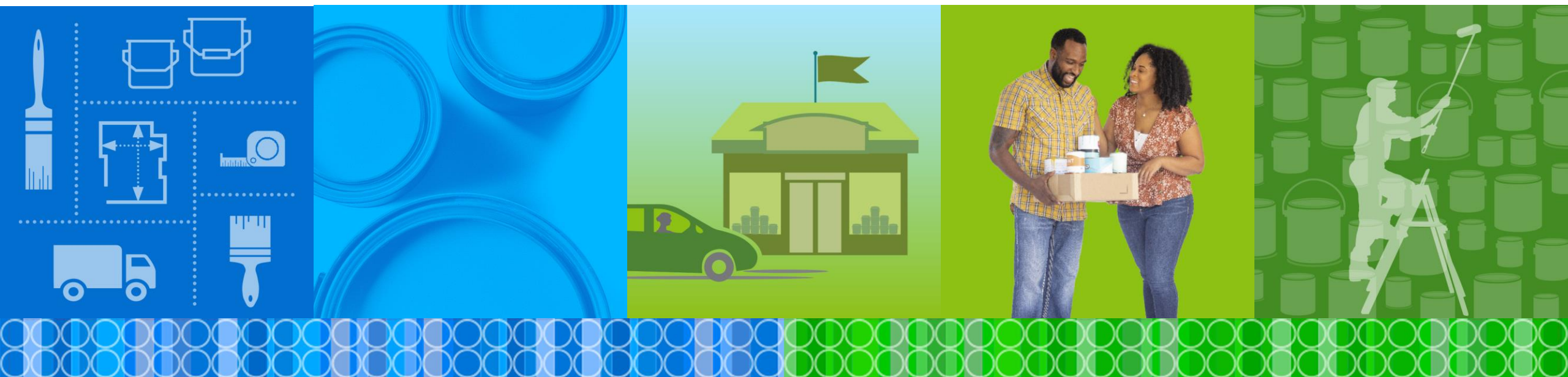




Illinois Paint Stewardship Program

IL Circularity Conference – October 2025

Jacob Saffert, Director of Eastern States



1 | PaintCare Overview





Background

- 501(c)(3) non-profit
- Subsidiary of the American Coatings Association (ACA)
- Designs and operates manufacturer-led paint recycling programs in states that pass paint stewardship laws
 - IL will be 12th program in U.S.
- Manufacturers register with PaintCare and pay fees based on paint sold into state. Fee dollars used by PaintCare to offer free paint collection and recycling services.

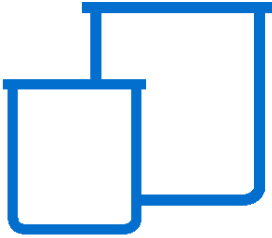
PaintCare Products

- “ARCHITECTURAL COATINGS”
 - House paint and primer
 - Stains
 - Deck and concrete sealer
 - Clearcoats
 - Latex and oil-based
 - Containers 5 gal or less
- Fee will be assessed, and consumers will be able to drop-off these items at PaintCare drop-off sites for no additional cost



IL Fee Schedule

\$0.45



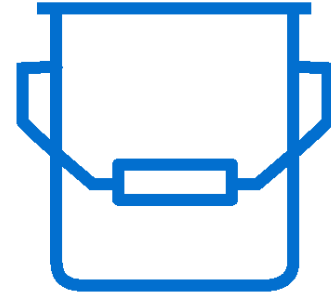
Small containers
e.g., pints & quarts

\$0.95



Mid-sized containers
e.g., 1–2 gallons

\$1.95



Larger sizes up to
5 gallons



2

Collection & Operations in Illinois



Drop-off Sites

- Paint retailers, HHW facilities, recycling centers, reuse stores, etc.
- Accept from households and businesses
- Sites trained by PC and regularly visited



Convenience Criteria

- Required by legislation
 - 1) At least 90% of IL residents must have a collection site or event within 15 miles
 - 2) At least one collection site or event for every 50,000 residents
- To meet these criteria, we are planning for 256+ drop-off sites across Illinois



PaintCare Sites in Illinois

- As of Oct 8:
 - Contracts covering 282 drop-off sites have been signed.
 - Contracts covering another 70 retail drop-off sites are under review.
 - Contracts with HHW facilities and other municipal collection sites are also in negotiation.
- Additional sites have expressed interest in participating and may proceed to contracting
- Robust coverage across the state



Large Volume Pickups

- Free pickup service to painting contractors, property managers, and others with large amounts of leftover architectural paint.
- 100 gallon minimum
- Online form to request



3 | What's Next

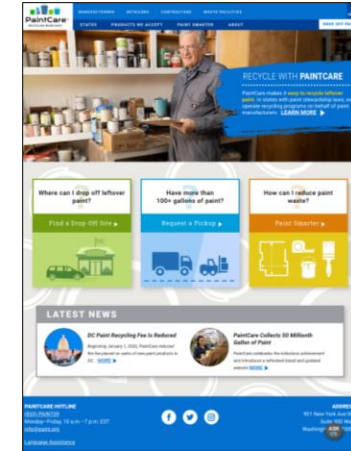
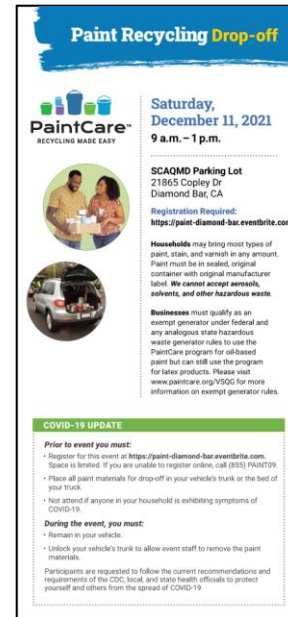




Next Steps

- Finalize remaining contracts with interested sites
- Every drop-off site receives an in-person training.
- Deliver collection supplies to drop-off sites
- Ramp up outreach efforts and promotion of the program
- **Program starts on December 1**
- Continue engaging with IEPA for oversight role
 - In the future, PaintCare will submit annual reports to agency

Education and Outreach

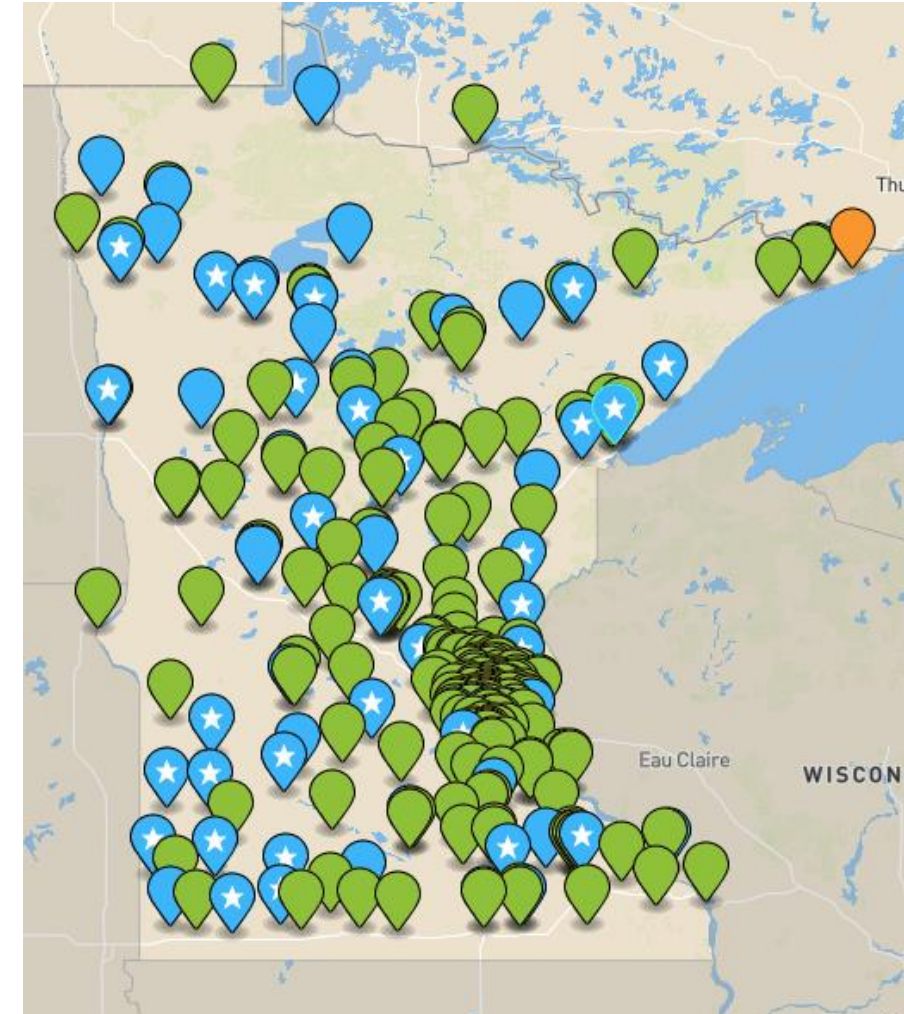
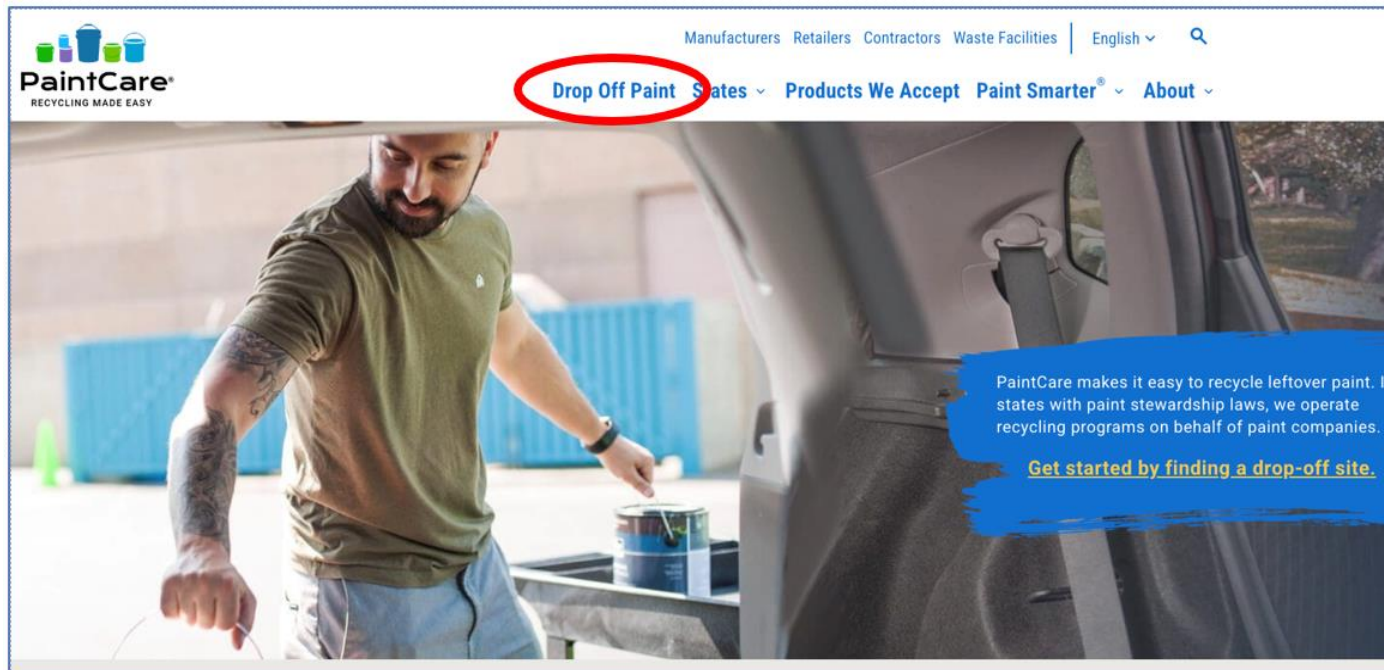


- Brochures
- Posters
- Signage
- Mailings
- Advertisements

- Brochures available in nearly 30 languages to meet needs of different communities

Drop-off Site Locator

- Interactive map will go live Dec. 1
- paintcare.org/drop-off-sites



Contact and Thank You



Jacob Saffert



(612) 772-4902



jsaffert@paint.org