



3 Degrees Toward Circularity

Maria Anna Rafac, Sustainability Coordinator

Ash Klinder, Sustainability Campus Intern



JOLIET
JUNIOR COLLEGE
—1901—

Agenda

- Sustainability at JJC
- Circular Economy
- 3 Degrees Toward Circularity
 - the What, Why, & How*
 - Take It Table
 - B.Y.O. Campaign
 - Romeoville Repair Cafe



JOLIET
JUNIOR COLLEGE
—1901—

What is

Sustainability at JJC?

- Core Value *defined by the Triple Bottom Line*
- Sustainability Union: admin, students, faculty, and staff
- Office of Sustainability



What we do:

- Coordinate sustainability initiatives, meetings and events at the college
- Serve on the JJC GAC and NAC
- Chair the Sustainability Initiatives Committee for SMHEC *regional higher ed consortium*
- Table and present for the community
- Collect pens, markers, and batteries to recycle

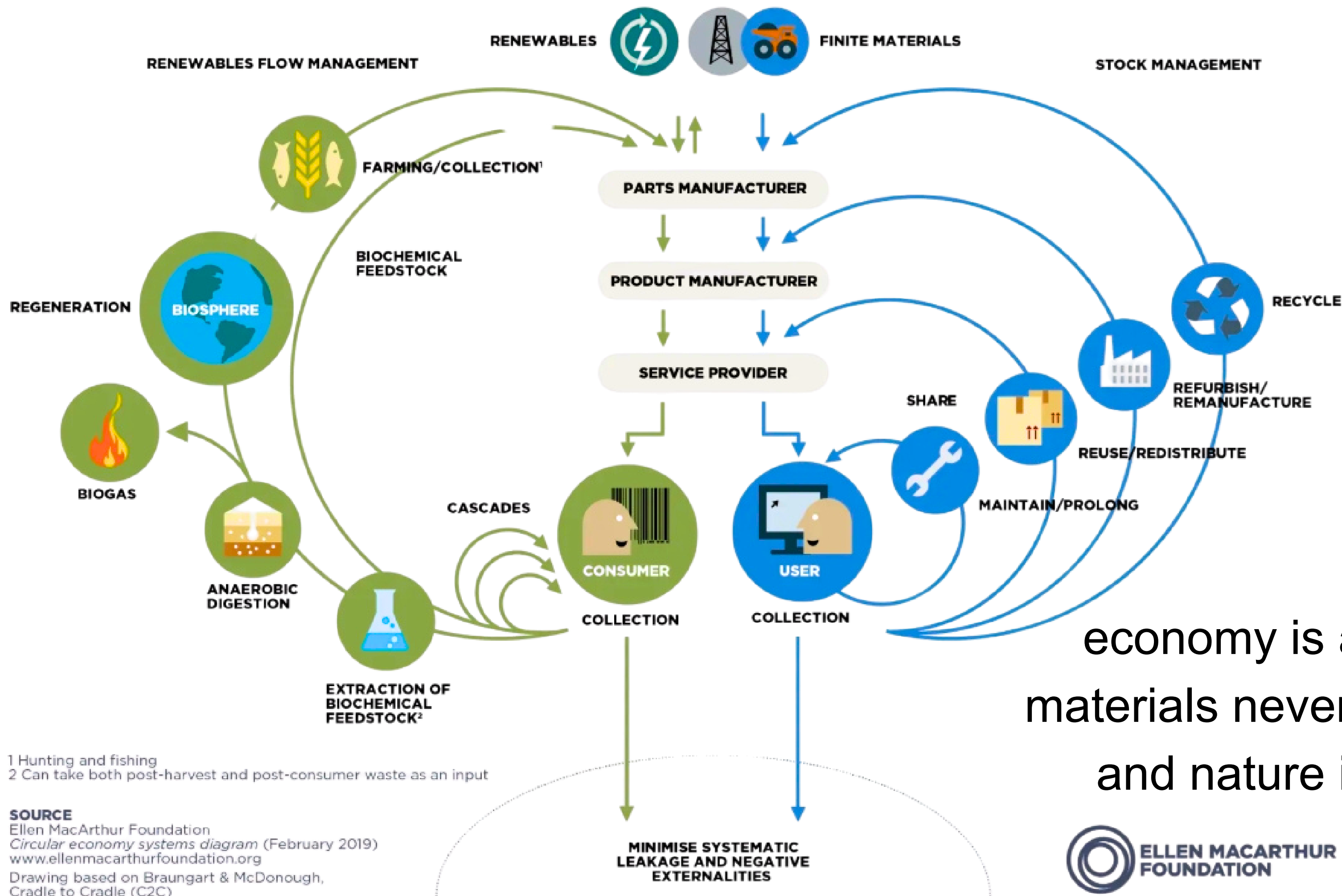


How we work:

- 3 person Leadership team—2 Student Employees & Part Time Coordinator
- Bi monthly Sustainability Union meetings
- Coordinate weekly events in April & October
- Attend external events promoting sustainability to the larger JJC Community

**What does a
circular
economy
mean to you?**





“The circular economy is a system where materials never become waste and nature is regenerated.”

SOURCE
 Ellen MacArthur Foundation
Circular economy systems diagram (February 2019)
www.ellenmacarthurfoundation.org
 Drawing based on Braungart & McDonough,
 Cradle to Cradle (C2C)



ellenmacarthurfoundation.org

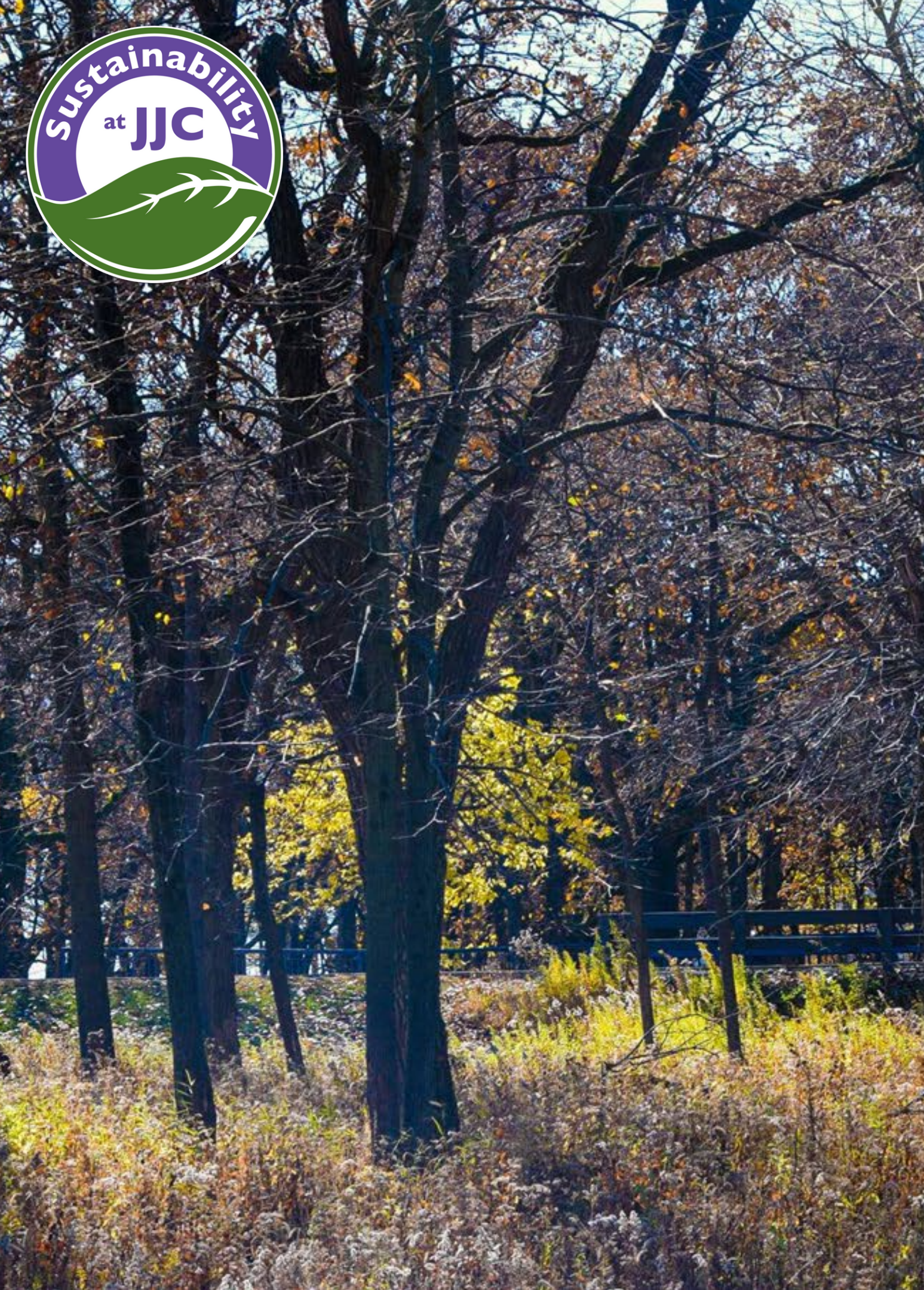


SUSTAINABLE DEVELOPMENT GOALS

17 GOALS TO TRANSFORM OUR WORLD



“A shared blueprint for peace and prosperity for people and the planet, now and into the future.”



3 Degrees Toward Circularity

1. Take it Table

2. B.Y.O. Campaign

3. Romeoville Repair Cafe

4. Bonus Compost Pilot!



TAKE-IT TABLE

**TAKE IT, BRING IT,
SWAP IT, LEAVE IT**

Accepting:

- Clothing (babies - adults)
- Books and textbooks
- School supplies
- Dishware
- Electronics' accessories
- (unopened) Personal care or beauty items
- Decorations
- and more!



Please clean up after yourself
and do not leave poor quality
items or garbage!

Level 1

↑ T 1039 - T 1070
Technical Department


← Conference Center

↑ T 1041 Cyber Cafe

← Restrooms

← Elevator

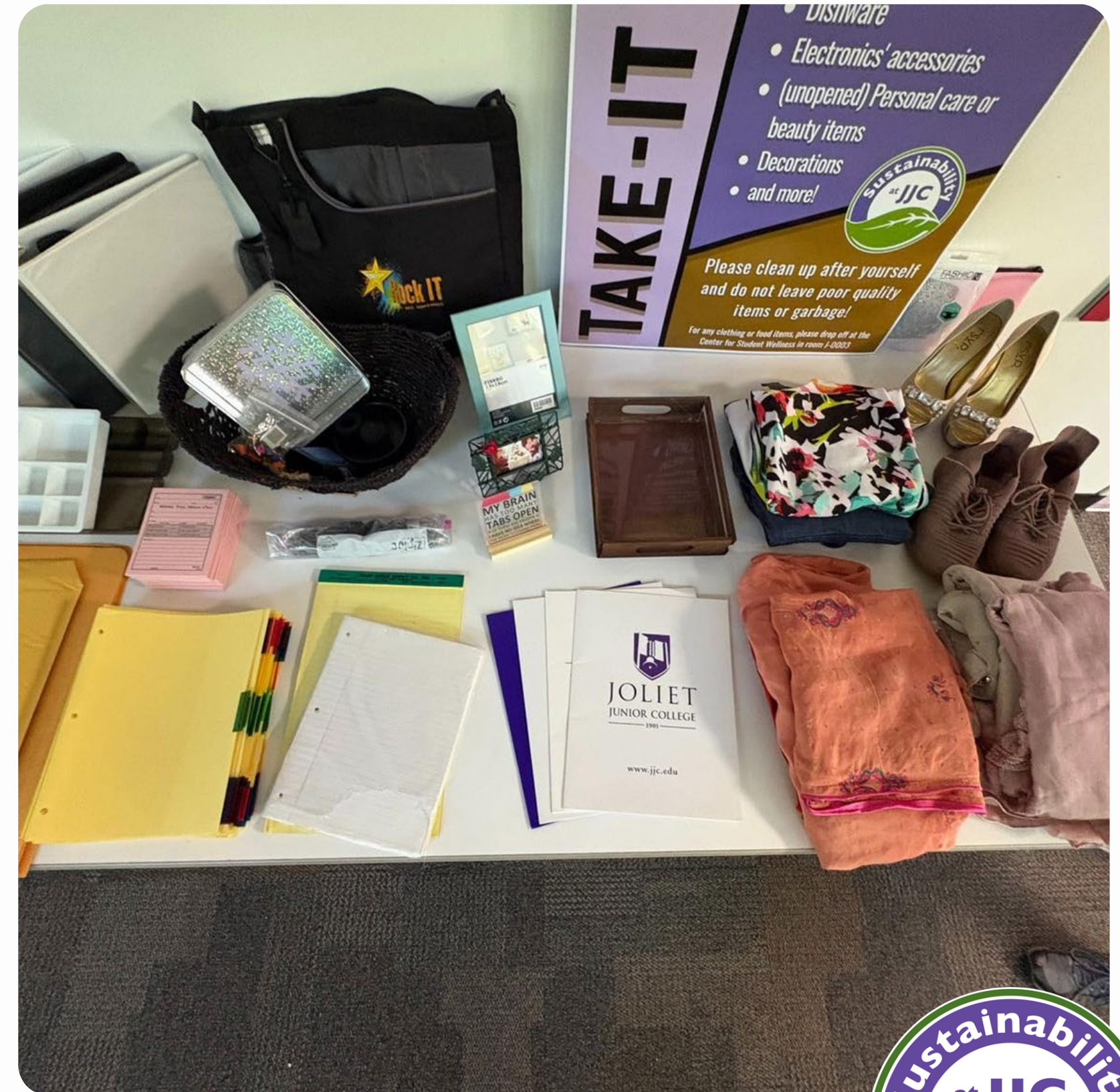
P Parking **East Lots**



Take It Table

What is it?

- Free second hand swap table
- Students, faculty, and staff bring in items from home or their departments
- Constant rotation of school supplies, clothing, books, household items, and more



Why make this space?

- Gives people an easy place to donate their old stuff rather than landfilling
- Saves money (FREE!)
- Builds community and awareness around second hand shopping





How to set it up

- Can be available to staff or to everyone
- Easy to keep up with even in high traffic areas, items are usually gone within a week
- Items lasting longer than a week are donated or taken to recycling





B.Y.O. Campaign

Bring Your Own stuff!

What is B.Y.O.?

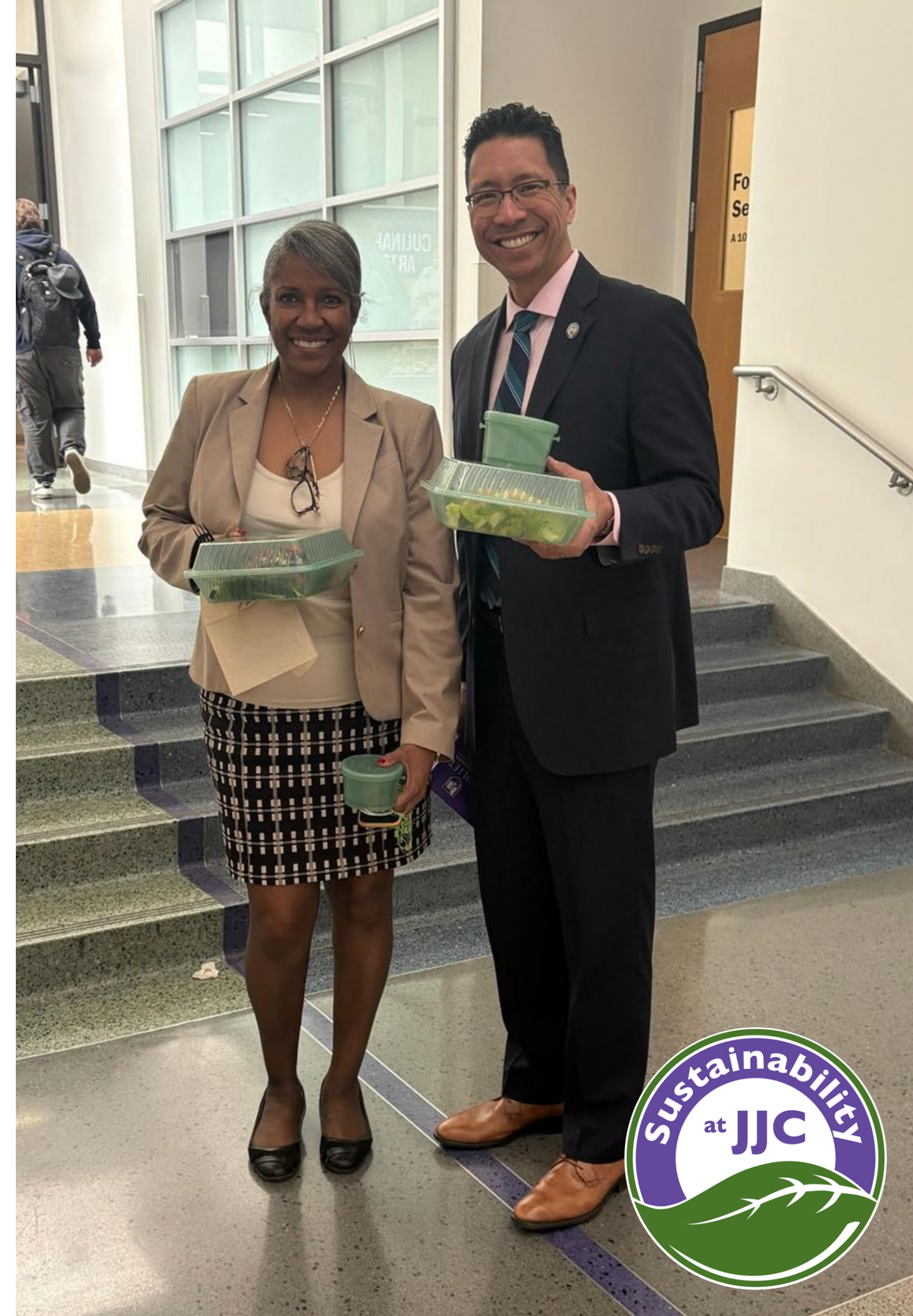
Call to action for everyone to refuse taking single use waste by carrying reusables with you.

- Create a bag to keep your containers
 - Keep in your car, office, by the door
- Use the containers for take out and leftovers at restaurants, or wherever else there are snacks or food!
- [Public Act 103-0524](#)



Why promote reusables?

- Reduce single-use waste everywhere
- Conserve materials and energy
- Promote Cycles of Reuse
- Encourage individual action by carrying a solution



How to B.Y.O.

- B.Y.O. Pledge Students, Faculty, Staff, Admin
- Discounts for JJC's reusable containers
- Bu.Y.O. Br.Y.O. *Free Second Hand Reusables*
- B.Y.O. To Go Community Pledge
- [Visit our website](#)





Sustainability at JJC

Build Your Own Bring Your Own Bag



Bu.Y.O.
Br.Y.O.

B.Y.O. to GO BASH!

May 10,
11:00 - 1:00
Romeoville
Campus



**FREE B.Y.O. BAG & CONTAINERS
& VEGETABLE PLANT!**

Romeoville REPAIR CAFE



What is a Repair Cafe?



[Visit our website](#)

Free meeting place where skilled volunteers bring their own tools to fix items and teach attendees how to do it themselves.

- Stations with different types of repairs

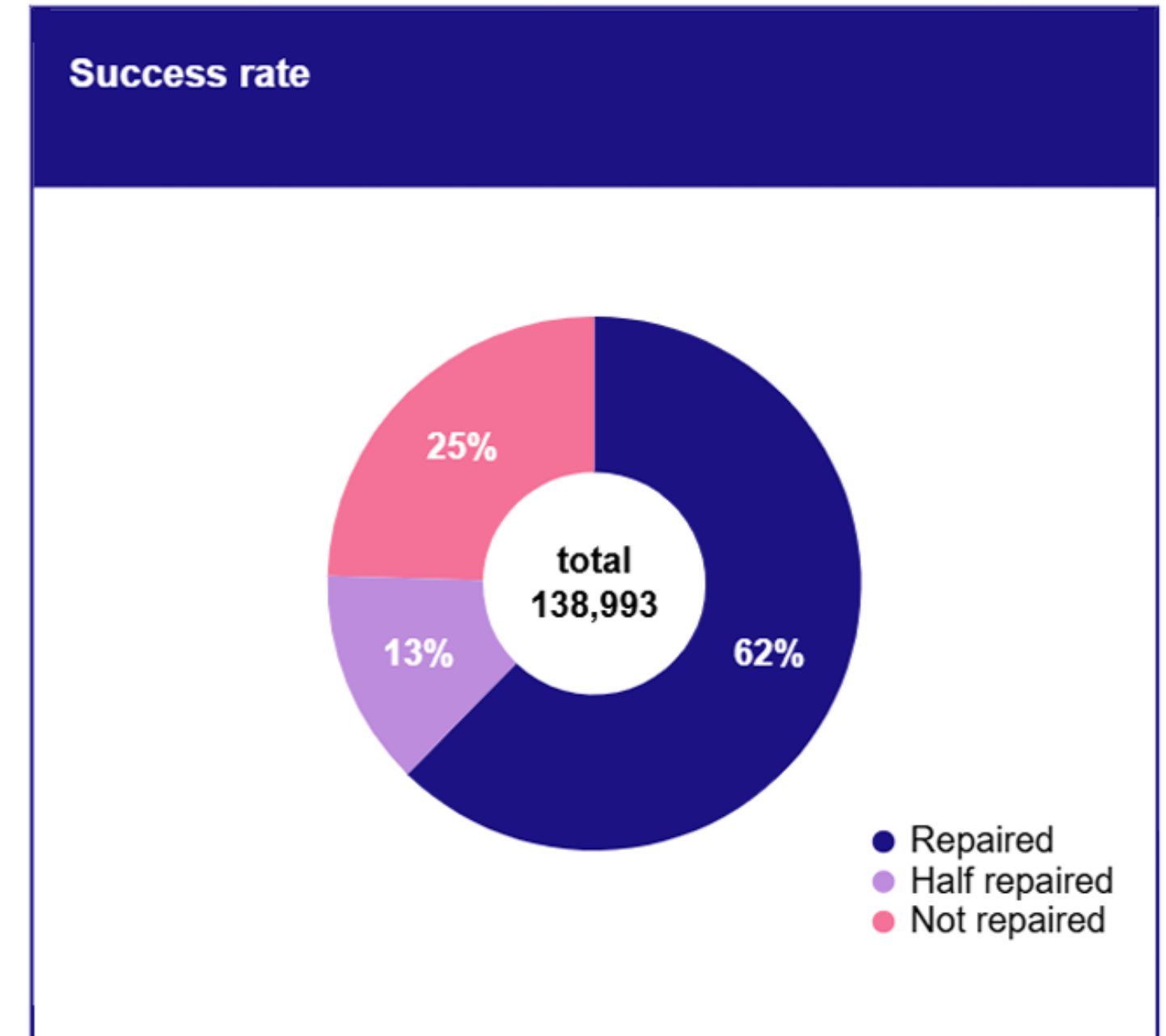
Why Repair Cafe?

- Facilitates knowledge transfer of invaluable repair skills
- Fosters appreciation for personal possessions
- Reduces avoidable waste
- Engages the community of all ages
- Saves money
- *Add to the global database of repairability! Repair Monitor*



What is Repair Monitor?

- Repair Café's Repair Monitor data collection tool allows organizers to add to the global data accumulated about the sustainability and repairability of items.
 - Products, brands, what is wrong with the item, can it be fixed



[See all dashboard data](#)

Repair Monitor & Right to Repair

- Makes Original Equipment Manufacturers (OEM's) responsible for excessive waste.
 - Combats Planned Obsolescence and poor durability.
 - Sanctions access to OEM Manuals and materials required to do repairs
 - [IL SB0122 and HB2549 Right to Repair 2025](#)



Right to Repair passed in the EU Parliament. As of 2025, 5 states in the US have Right to Repair Acts & Laws.



How to start a Repair Cafe

- A reliable space
- An organizer/coordinator
- Passionate Volunteers
- Coffee/donuts



REPAIR
CAFE

Register for free with Repair Cafe for their 28 page how-to manual and added to [their website.](#)

Most repairs are simple!

Global data of most common repairs and items:



- 1.Coffee Maker
- 2.Vacuum Cleaner
- 3.Pants
- 4.Bicycle
- 5.Sewing Machine
- 6.Clock
- 7.Lamp/lighting
- 8.knives/scissors
- 9.Radio
- 10.Toaster

Some tips!

- Repair events can be one off or weekly
- Volunteer crew size will vary
- Partner with local green groups or municipal organizations
- Seek out donations for supplies & coffee
- Use Repair Monitor to add to the global database of repairability of items



Quotes from the Attendees

“Elise was great
and fixed
everything. So
nice and
helpful.”
-FL24



“Loved this! Fixed both
necklaces and remade
and glammed up my
earrings & made me a
matching bracelet!” -FL23

“People **CARED** about my items and their stories. Elise even polished the tarnish off my bracelets in addition to repairing them. That extra step says everything about the artist!!” -FL24

Quotes from the Attendees



**“I don’t want to add to
landfills.” -SP24**

**“This is the absolute coolest!!!
What a game-changer this
was! Keep doing this!” -SP25**

**“Nick was very knowledgeable and patient. We are confident the item
was fixed. Thank you Nick.” -FL24**

Romeoville
REPAIR
CAFE

**~800 lbs of repairable
items diverted from
landfills in 4 events.**



**REPAIR
before
REPLACE!**

Next Repair Cafe:

Sat. October 18

10:00 - 3:00 pm

Romeoville Campus

Contact ashley.klinder@jjc.edu or scan the QR Code for more information on how to participate or volunteer.



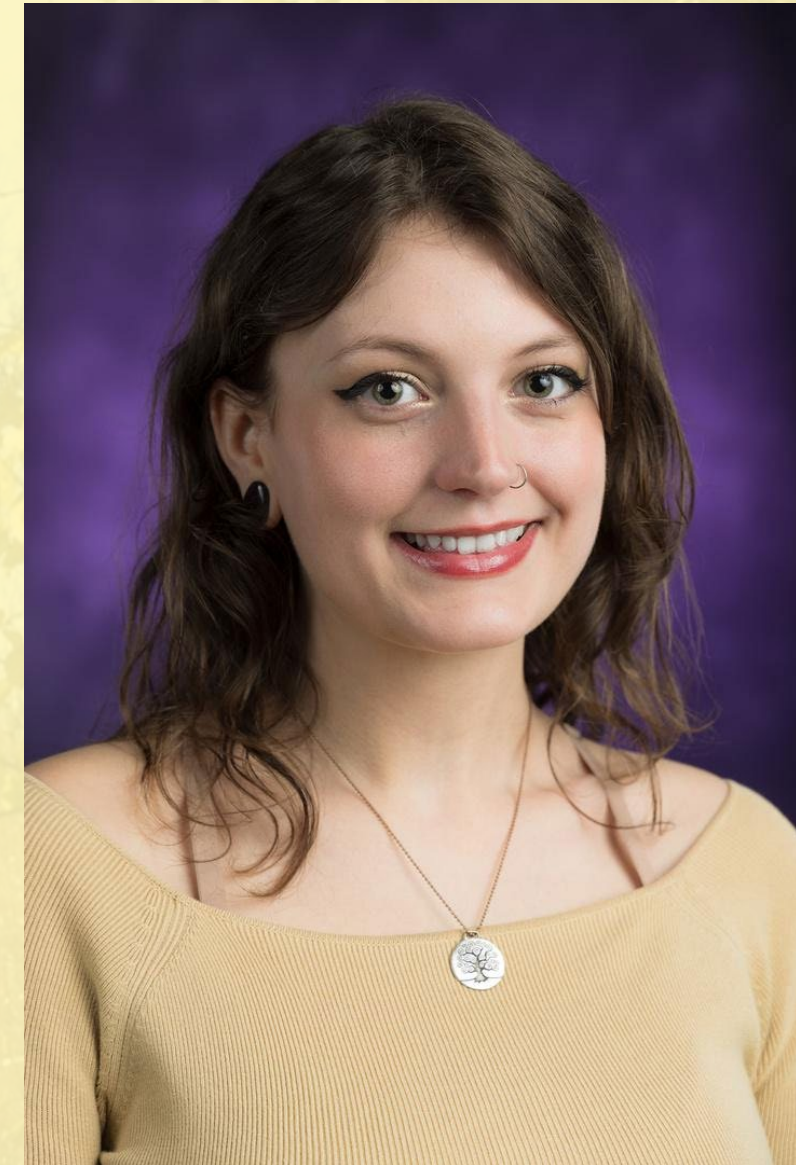
Thank you!



Maria Anna Rafac
Sustainability Coordinator

✉ mrafac@jjc.edu

☎ (815)280-6862



Ash Klinder
Sustainability Intern

✉ ashley.klinder@jjc.edu

☎ (815)280-2644